

Cambridge & Coleridge – 5k Summer Series

Thursday 14th August 2025

Race start: **7pm**

Wellcome Genome Campus, Hinxton, CB10 1SA

Race licence: EA #29576

Arrival & car parking

By car: Please enter via the main Genome Campus entrance, off of the A1301. It is signposted from the road as 'Genome Campus'. When you arrive you will be directed by marshals into Car Park A or E. Please car share where possible. Do not park in Hinxton village as we do not want to disturb local residents. There is plenty of parking within the campus. **Please note:** The road out of the car parks will **NOT** be in use during the race. If you need to leave before the race ends (approx. 7.45pm) please consider parking in the **visitor** car park or travelling a different way.

By train / foot / bike: The nearest train stations are Whittlesford (approx. 2.5 miles away) and Great Chesterford (approx. 2 miles). If arriving by foot or bike, you can enter via the back gate from Hinxton village if easier (see 'Hinxton entrance' on map below). There will be a volunteer marshal to let you in, just let them know you are here for the 5k.

Bike parking is located near the start area in the underground car park. Please don't leave bikes on the grass or around the start area as it will get busy.

Start area

The start area location is marked on the map below. Marshals will be around to direct you there from the car park or back gate. This is a paved area but club flags can be put in the surrounding grass area. Runners can leave their bags in the start area at their own risk, but to help the campus security staff, please leave your bags in vehicles where possible.

If you need to warm up, please **run on pavements** not on the road, as campus staff may still be leaving the campus at this time.

Toilets

Toilets are located in the main café, area 15 on the map. Please do not urinate around the campus grounds. Our chance of returning to this excellent course in future years depends on everyone respecting the site.

The course

The race will start promptly at 7pm.

It is a three lap course, going anti clockwise. Detailed instructions are below. On laps 1 and 2 you will go up the road towards the Hinxton entrance and will loop around the roundabout by Hinxton Hall (point 20 on the map). At this part of the course the road splits, and this will be marked by cones. On the third lap you will turn left and carry on round the main road loop to the finish.

As this is a three lap course, please be mindful of your fellow runners, allowing space for those passing, but equally not barging past if you are lapping someone.

Upon finishing, runners must go through the funnel and collect a finish token. Please stay in finishing order in the funnel.

This course is entirely on road and is mostly flat. However, there are a number of speed bumps along the course which runners will need to be mindful of.

This course has been officially measured.

Water

Water will be available at the finish, please do bring your own bottle if you can.

Post-event awards celebration

As this is the last event in the series, we will be hosting the final league awards ceremony and celebration in the Genome Campus main café – this is the same building where the toilets are located. There are outside tables and chairs if we have a good evening for it!

There will be a simple sandwich buffet put on for attendees. Food will be labelled with any allergens, however runners are responsible for consuming any food at their own risk.

There will also be a selection of soft and alcoholic drinks available to purchase. **Please bring cash.**

Safeguarding

This event is open to club members aged 14+. Any under 18s must attend with a parent / guardian, as per our safeguarding policy. If there are any safeguarding incidents during the event, please notify the race director.

Event map

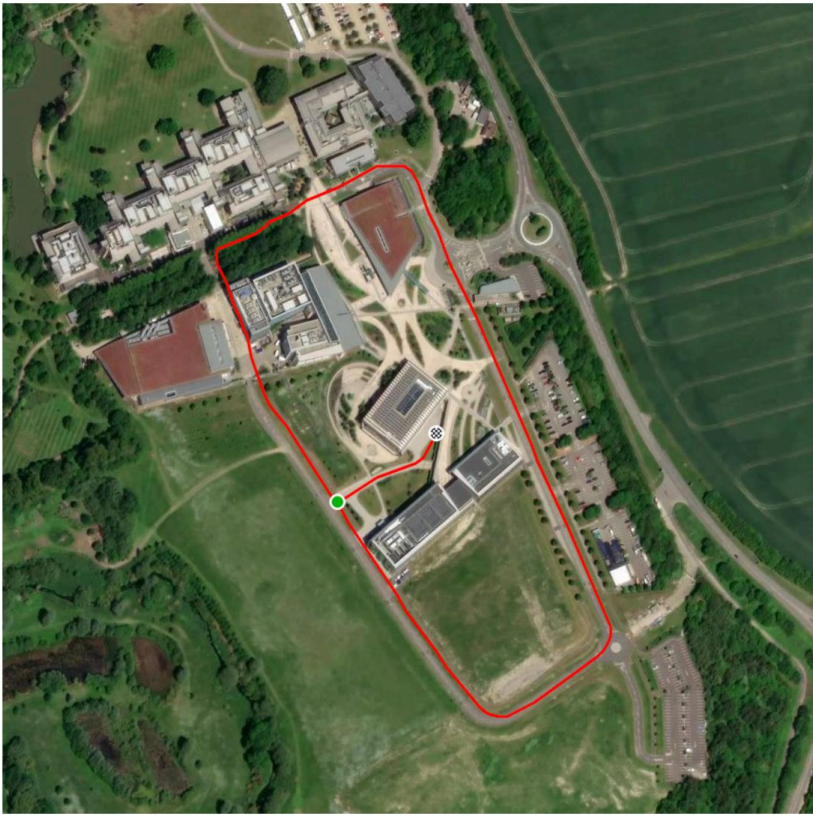


Course map & description

Map of laps 1 and 2 (1.9km per lap)



Map of Lap 3 (1.2km)



Genome Campus 5km road race

3 lap course: laps 1 and 2 are "long", lap 3 is "short"

Start line:

This is an access road to a small car park and service area.

Runners start with their back to the car park, with the front-runners lined up at a visible path crossing. The back of the assembled pack will be near the zebra crossing / car park barrier system.

START LINE

The near edge of raised path crossing (edge towards car park).



Lap 1:

Runners turn left after 100m or so, onto the double-track perimeter road.

Runners will keep left, on the racing line. Caution for speed bumps.

Following a left hand turn, runners will turn left on the road at the small roundabout near a multi-story car park.

Long straight past Thornton Building frontage, and the Car Park A exit and entry.

At the campus entrance roundabout and bus loop, runners stay left of the central roundabout reservation and continue straight.

(This makes it possible for a vehicle to travel from the campus entrance, to car park A and all the way round to the start/finish line and back if really needed)

Between the roundabout and the bent-T junction (**///rested.outwards.bonkers**), near the zebra crossing, runners need to take the racing line towards the right hand turn. Office buildings will be to their far left, a small smoking shed and gardeners compound is to their right.

KEEP RIGHT AT JUNCTION



Runners should stay on the RIGHT HAND HALF of this road as it winds round past Car Park D, and some portacabins to their right. Runners will pass between the buildings of Hinxton Hall Conference Centre, still keeping right. They will turn by following a left-handed turn around the carriage-turn in front of the conference centre (**///bunch.toolkit.mourner**).



LEFT-HANDED TURN AROUND CARRIAGE TURN, THEN KEEP RIGHT

From there, they will return head-on to following runners, still keeping on the RIGHT HAND HALF of the road. Cones/marshalls will separate the streams.

At the ///rested.outwards.bonkers junction, they will now turn sharp right, down a slight slope and past the underground car park entrance. They should KEEP RIGHT throughout.

They will cross a pedestrian area, with picnic tables to the right, and through a road gate. Ideally they should be keeping right here too.

Around ///stone.motored.noble, they turn left and run through a deliveries area, continuing straight through another large road gate to reach the end of lap 1. Again, ideally they will keep right.

Lap 2

Lap 2 begins close to the start line, but runners will continue straight from the end of lap 1 instead of turning left out of the start area.

Lap 3

Lap 3 is shorter. It follows the same path as laps 1 and 2 until the campus entrance roundabout.

At the campus entrance roundabout, runners should KEEP LEFT on their third lap, to TURN LEFT towards the underground car park. They will be merging with slower runners who will be to the faster runners' right.



From here they will follow the course as before, but keeping TO THE LEFT of any slower runners they may be lapping.

They will TURN LEFT into the same access road the race started from, passing through the start line in reverse, and taking a dead-end left into a service area where the finish funnel will be. This is NOT in the covered/underground car park.